

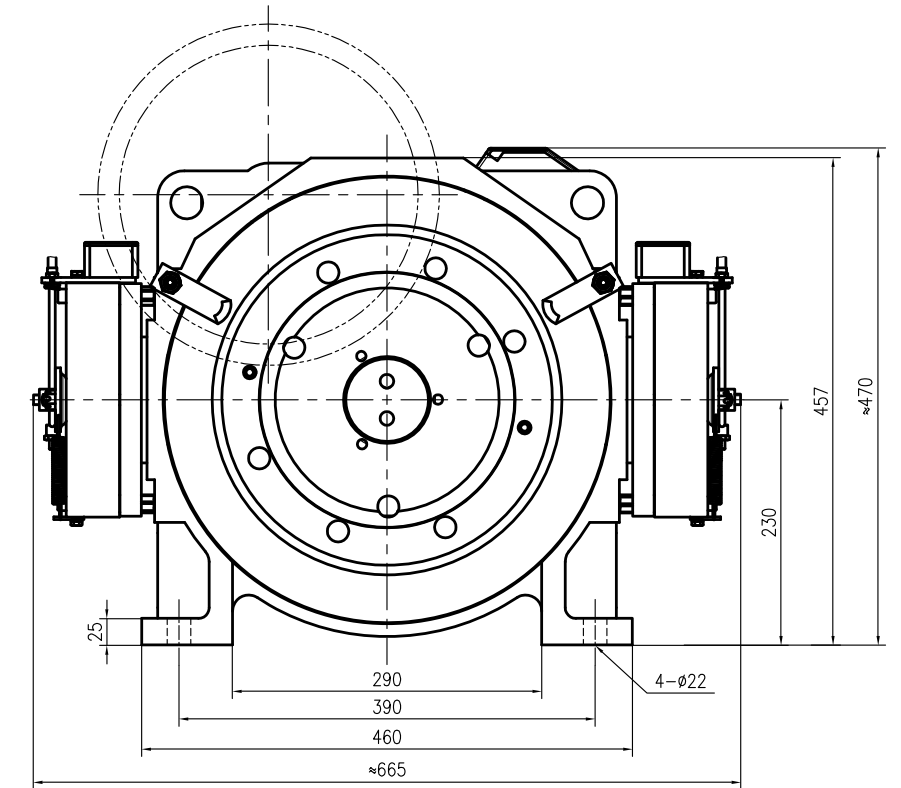
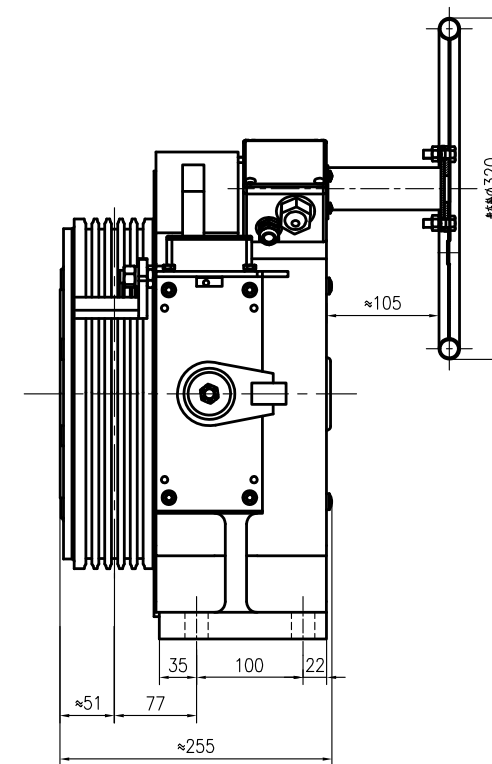


► SGL10

Elevator traction machine

Voltage : 380V
 Suspension : 2 : 1
 FZD10 Brake : DC110V 2×0.84A (2×1.1A)
 Weight : 200kg
 Max.Static Load : 2000kg

Spec	Load (kg)	Lift Speed (m/s)	Sheave Diam(mm)	Rope Sheave (mm)	Current (A)	Torque (Nm)	Rated Speed (rpm)	Frequency (Hz)	Power (kW)	Pole	Rating	INS.Class	IP Code
SGL10-31P0	320	1	Φ325	3xΦ8x12	6.3	200	118	31.5	2.5	32	S5(40%)	F	IP41
SGL10-31P5	320	1.5	Φ325	3xΦ8x12	8.9	200	177	47.2	3.7	32	S5(40%)	F	IP41
SGL10-31P6	320	1.6	Φ325	3xΦ8x12	8.9	200	189	50.4	4	32	S5(40%)	F	IP41
SGL10-31P7	320	1.75	Φ325	3xΦ8x12	9.4	200	206	54.9	4.3	32	S5(40%)	F	IP41
SGL10-41P0	450	1	Φ325	4xΦ8x12	8.3	265	118	31.5	3.3	32	S5(40%)	F	IP41
SGL10-41P5	450	1.5	Φ325	4xΦ8x12	11.7	265	177	47.2	4.9	32	S5(40%)	F	IP41
SGL10-41P6	450	1.6	Φ325	4xΦ8x12	11.7	265	189	50.4	5.2	32	S5(40%)	F	IP41
SGL10-41P7	450	1.75	Φ325	4xΦ8x12	12.5	265	206	54.9	5.7	32	S5(40%)	F	IP41
SGL10-50P6	550	0.63	Φ325	5xΦ8x12	5.6	290	74	19.7	2.2	32	S5(40%)	F	IP41
SGL10-50P7	550	0.75	Φ325	5xΦ8x12	8.1	290	88	23.5	2.7	32	S5(40%)	F	IP41
SGL10-51P0	550	1	Φ325	5xΦ8x12	8.1	290	118	31.5	3.6	32	S5(40%)	F	IP41
SGL10-51P5	550	1.5	Φ325	5xΦ8x12	12.2	290	177	47.2	5.4	32	S5(40%)	F	IP41
SGL10-51P6	550	1.6	Φ325	5xΦ8x12	12.2	290	189	50.4	5.7	32	S5(40%)	F	IP41
SGL10-51P7	550	1.75	Φ325	5xΦ8x12	13.2	290	206	54.9	6.3	32	S5(40%)	F	IP41
SGL10-60P6	630	0.63	Φ325	5xΦ8x12	6.3	325	74	19.7	2.5	32	S5(40%)	F	IP41
SGL10-60P7	630	0.75	Φ325	5xΦ8x12	9	325	88	23.5	3	32	S5(40%)	F	IP41
SGL10-61P0	630	1	Φ325	5xΦ8x12	9	325	118	31.5	4	32	S5(40%)	F	IP41
SGL10-61P5	630	1.5	Φ325	5xΦ8x12	13.6	325	177	47.2	6	32	S5(40%)	F	IP41
SGL10-61P6	630	1.6	Φ325	5xΦ8x12	13.6	325	189	50.4	6.4	32	S5(40%)	F	IP41
SGL10-61P7	630	1.75	Φ325	5xΦ8x12	14.8	325	206	54.9	7	32	S5(40%)	F	IP41



REMARK

- 1.The machine can be configured with the handwheel and the remote manual brake release with 4-meter cable.
- 2.When this machine is used for loading 630kg, the coefficient of elevator balance system shouldn't be less than 0.47.
- 3.When this machine is used for loading ≤450kg, the current of brakes are 2×0.84A; when this machine is used for loading >450kg, the current of brakes are 2×1.1A